



RONDO®
insider

may 2016

**FROM OFFICES TO
APARTMENTS:
Melbourne's
'The William'
transformation**

**GOLD COAST UNIVERSITY
LIGHT RAIL STATION**
Queensland

**CHRISTCHURCH JUSTICE
AND EMERGENCY SERVICES
PRECINCT**
New Zealand

QUEST APARTMENTS
Western Australia

PLUS MORE INSIDE...

**NEW PRODUCT:
RONDO 249 SUSPENSION
BRACKET**

RONDO APP UPDATE



A new update is currently available for the Rondo Apple or Android mobile application. To get access to our latest Rondo Wizard updates and have improved functionality all round, make sure to login to the iOS App from iTunes or Android App from the Google Play Store.

Downloaded by over 13,500 users worldwide the free Rondo App helps users to:

- Calculate what Rondo products are required in a wall and ceiling design
- Locate your nearest Rondo Distributor
- Access images and descriptions of over 250 Rondo products

INSTALLATION GUIDES IN CHINESE

We're now offering our Rondo Installation Guides in Simplified Chinese for the installation of our KEY-LOCK® Concealed Suspended Ceiling Systems, Steel Stud and Track and EXANGLE® Finishing Sections.

To download these guides, visit our website or contact your nearest Rondo Distributor for a printed copy.



Inside this issue:

PROJECTS

The William VIC	2
Gold Coast University Light Rail Station	4
Christchurch Justice and Emergency Services Precinct [NZ]	5
Quest Apartments WA	6
Fusion Apartments WA	8
Eaton Family Dental Practice WA	9

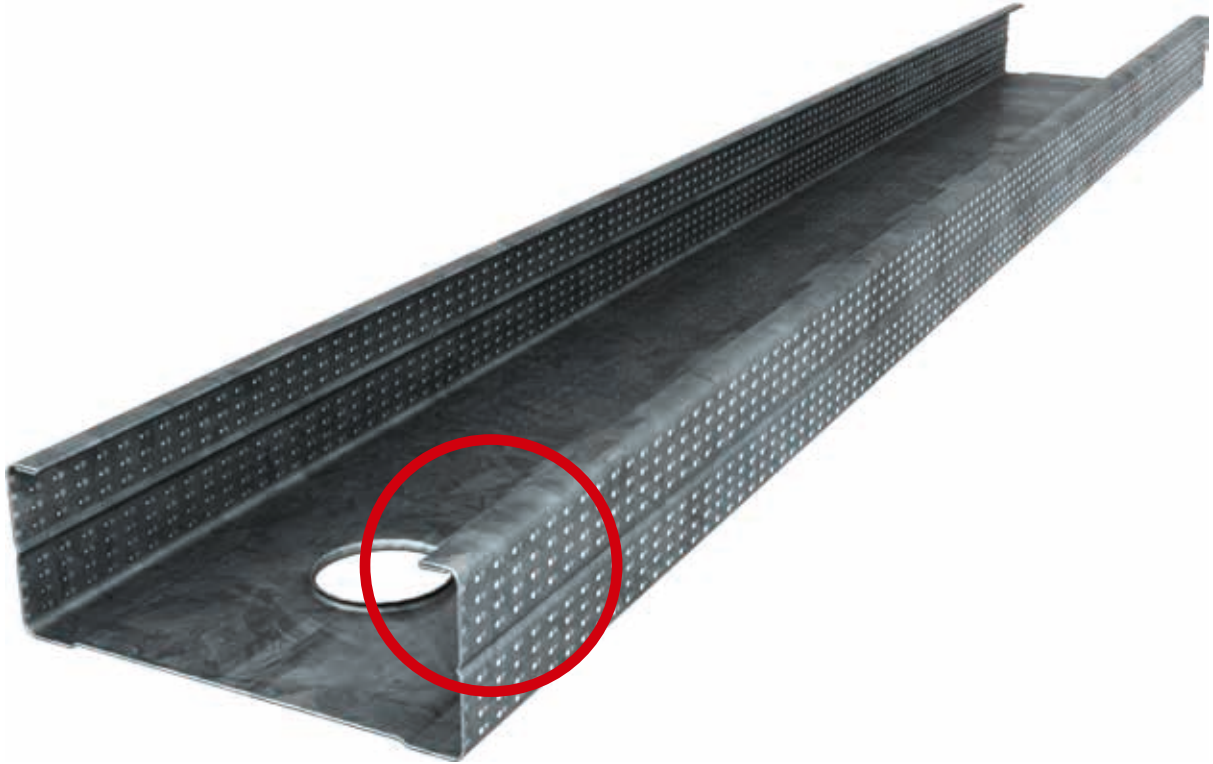
PRODUCT NEWS

New Rondo 249 Suspension Bracket	10
Double Punched Nogging Track Range Addition	10
Improved Rondo Flexible Track	12
Rondo Clips Packaging	12
New Look for Acoustic Mounts	12

UPDATES

Kids Under Cover Cubby House Challenge	13
--	----

For once, our latest stud is **NOT** cutting edge



(Something we are very proud of)

Designed to be not only stronger, but safer, our range of Hemmed Stud & Track sections help reduce handling injuries on site.

The hemmed return lip increases rigidity, preventing unwanted rotation as well as eliminating sharp edges.



The vertical rib in the stud face allows the wall linings to be placed centrally, ensuring easier and faster fixing, while the deeper knurling provides better screw location and retention. What's more, our studs lock perfectly into each other, creating the best boxed stud profile in the market.

RONDO[®]
www.rondo.com.au

PROJECTS

The William [VIC]



THIS two-year, \$100 million project was undertaken by builders Built, sub-contractors Expoconti, and Bruce Henderson Architects for developers Hengyi.

Rondo's Technical and Sales Teams made regular on-site visits, offering both design and installation solutions. Specifically, the team ensured all the external walls met the required wind loads, along with designs for all 5-8 metre high external walls to the shop fronts.

Initially, Built investigated a number of options, including having full height and width windows, but this would have required an internal stud wall adjacent to the window to support the plasterboard linings. Rondo were asked to step in and provide expert technical advice as to a solution for a heavy gauge structural system which would not affect internal apartment areas and substrate depths.

Using our MAXIframe® External Wall Framing System, we were able to provide a full design specification for the entire external façade that met wind load requirements, also providing one stud wall to accommodate both internal and external linings.



This delivered a more efficient installation process in terms of both labour and material. Expoconti was able to complete all works (internal and external) efficiently, allowing for full control of each stage, and reducing the number of tradesmen required on site.

Our Sales and Business Development Manager, Charlie Khoury says Rondo's success in the project was largely thanks to

our engineering team who provided technical designs at a fast pace throughout the project.

In total, the following Rondo products were supplied to 'The William':

- ***8000m² of Rondo KEY-LOCK® Concealed Suspended Ceiling System***
- ***195,000 lm of Rondo's Steel Stud and Track***
- ***55,000 lm MAXIframe® External Wall Framing System***
- ***1000 x PANTHER® Sound-Rated Access Panels***



PROJECTS

Gold Coast University Light Rail Station [QLD]



BUILT by GoldlinQ the recently completed, five-year, \$1 billion Gold Coast Light Rail Project has proved an instant success.

To serve the needs of residents and visitors to the Gold Coast a variety of strategically located stations have been required.

One of which is the Architectus Architects designed Gold Coast University Station. Rondo worked closely with sub-contractor customer Precision Interior Walls & Ceilings (PIWC) whose primary responsibility was to install the specialised aluminium linings to the curved feature ceilings.

PIWC Manager Ashley O'Connor worked closely with Rondo using CAD drawings to create a suitable ceiling framing system before the panels were made to ensure the project's specific design criteria was met.

Rondo's technical team provided the necessary advice to meet the specifics of the design which had to incorporate multiple curves and angles, particular wind load and acoustic requirements. These were met with various Top Hat profiles and Steel Stud and Track systems all allowing, in particular, cantilevering of the ceiling panels whilst also following compound curves but still maintaining security against high wind loads and enabling a high standard of finish to be achieved.

Rondo Sales Representative, Ory Yaxley, commented that the end result was outstanding and "PIWC had once again shown their high quality workmanship and that no challenge was too great for them".

To reinforce their efforts PIWC was also awarded the 2015 AWCI Specialist Linings Award at their annual Awards Night for this project, receiving deserved credit and recognition for their outstanding work.

Christchurch Justice and Emergency Services Precinct [NZ]

AS part of the extensive Christchurch rebuild, construction of the Christchurch Justice and Emergency Services Precinct is underway with the \$300m project set to be complete by mid-2017. Main contractor Fletcher Construction has been tasked with delivering the Precinct and is working with Alpha Interiors, Forman Commercial Interiors and Simple Solutions.

Rondo was called upon to supply our market leading Seismic Wall and Ceiling System including Steel Stud & Track Drywall Framing, KEY-LOCK® Concealed Suspended Ceilings, and DUO® Exposed Grid Ceiling Systems.

Our Sales and Technical teams along with KCL Engineering worked closely to design each individual wall and ceiling to meet seismic requirements on the building in Christchurch Central. Due to the walls and ceilings having the

potential for large seismic movements, an integrated approach by Rondo and KCL Engineering teams was required.

Senior Rondo Engineer Patrick Liu travelled to NZ and dedicated time working with KCL Engineering to view the location and design of the walls, which our NZ Country Manager, Darren Brown, has credited as providing a successful outcome in delivering a customised solution.

The 42,000m² precinct will be home to the Ministry of Justice, New Zealand Police, Department of Corrections, St John New Zealand, New Zealand Fire Service and Civil Defence and Emergency Management functions of the Christchurch City Council and Environment Canterbury. The Precinct also has 72 hours resilience for building services if local networks are unable to support the Precinct with power, water and waste services.



PROJECTS

Quest Apartments [WA]



THE latest apartment-hotel addition to Perth's CBD is the Quest Apartments. Located in East Perth, the \$14.5 million project will be home to tourists and business professionals alike visiting East Perth.

Rondo worked alongside builder, Diploma Group and sub-contractor, Northline Ceilings, to develop designs that could accommodate the substantially high wind pressures associated with this project. The project was subject to wind loading up to 2.8kPa ultimate and 1.9kPa serviceability.

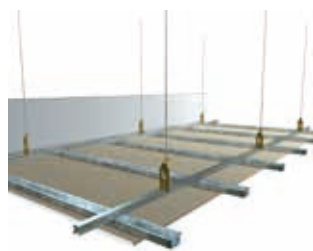
Our technical designs specified wall and ceiling systems, as well as complementary accessories to be supplied to the project, including:

- **16,000 l/m of Rondo KEY-LOCK® Concealed Suspended Ceiling System**
- **38,000 l/m of Rondo Steel Stud & Track**
- **850 l/m of Rondo Shaftwall One-Way Erected System**
- **3,400 l/m of Rondo 552 & 553 Steel Angles**
- **250 l/m of Rondo MAXIjamb® Stud**
- **2,300 l/m of Rondo EXANGLE® Beads**

Being able to provide tailored designs within a tight deadline was crucial to the project and we're happy to note the Quest Apartments are on track for a 2016 completion.



Photo Credit: ©Peter Bennetts Studio



- Rondo KEY-LOCK® Concealed Suspended Ceiling System
- Rondo Steel Stud & Track

we're behind the best buildings

PROJECTS

Fusion Apartments [WA]



THIS five-star ultramodern apartment complex is in the heart of Perth's entertainment precinct, Burswood. PACT Construction, alongside sub-contractor Topend Ceilings and Hillam Architects were responsible for delivering the 89-apartment ultimate 'urban living space'.

Rondo provided technical advice for door framing using 64mm 1.15BMT Stud and KEY-LOCK® Concealed Grid supporting Innowood Timber Panels.

A Rondo WA Technical Sales Representative attended the project to view the installation of Rondo Systems, making sure that they met customer expectations and that our products were delivered safely on time.

The result being limited delays and the project could progress according to schedule.



So far, Rondo has designed, produced and delivered approximately:

- **12,000 l/m of Rondo KEY-LOCK® Concealed Suspended Ceiling System**
- **4,500 l/m of Rondo EXANGLE® Finishing Sections (P01 and P50)**
- **5,000 l/m of Rondo Steel Stud and Track (64mm x 1.15BMT and 64mm x 0.50BMT)**

Eaton Family Dental Practice [WA]



CONSTRUCTION on the new Eaton Family Dental Practice fit-out is complete. The building was designed by architect, Caroline Yuen Architecture and the build was awarded to Smith Constructions. Rondo, in conjunction with Wall and Ceiling Contractor Ben Baker Ceilings, have delivered a high class Dental Practice for the growing Eaton Community.

Rondo's standard detail allowed for rooms to be constructed with individual ceilings, which allowed the surrounding walls to be full height resulting in the project's acoustic requirements being achieved.

Crucial to the success of the project was our 282 Direct Fix Furring Channel Clip for use with Membrane Insulation.



The clip assisted by allowing services (electrical conduit and plumbing piping) to be installed between the lining and the tilt up panel, to maximise the floor space.

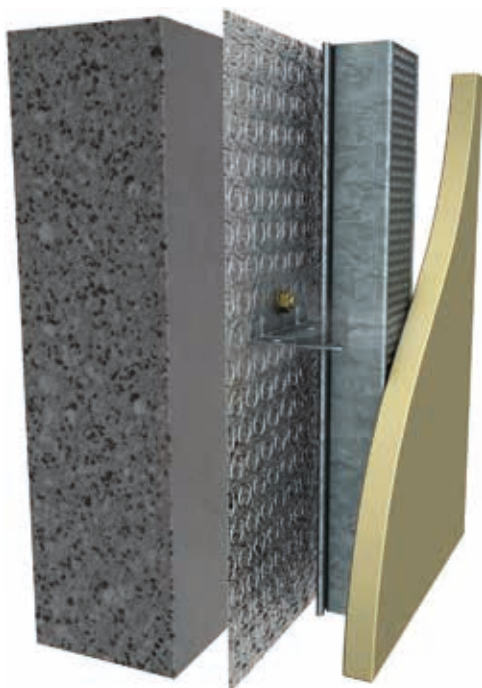
Where larger services were required, the 282 Clip was substituted with our BG05 BETAFILE® Double Membrane Insulation Clip which accommodated the services and removed the need to install a stud wall.



The mix of Rondo products on the project included:

- 2000 l/m of Rondo KEY-LOCK® Furring Channel
- 2000 m² of Rondo DUO® Exposed Grid Ceiling System
- Rondo BG05 BETAFILE® Double Membrane Insulation Clips
- 300 l/m of Rondo EXANGLE® Finishing Sections
- 340 l/m of Rondo Steel Stud and Track
- Rondo 282 Direct Fix Furring Channel Clips

The completed project is now home to a full-service dental practice personalised to cater to all patients' needs.



Rondo 282 Clip shown in situ

PRODUCT NEWS

New Rondo 249 Suspension Bracket



Our new Suspension Bracket is used for suspending Rondo 121 Rod to concrete using 9mm anchors. Called Rondo 249, the Suspension Bracket is an addition to our KEY-LOCK® Concealed Suspended Ceiling System range.

It's the same as our 247 Bracket except that it has a 9mm hole for use with a 9mm screw type anchor, such as the Hilti HUS-H Screw Anchor.

Rondo 249 is 60mm in length and is suitable for use in indoor, dry conditions, both seismic and non-seismic applications.

Originally designed to suit the seismic requirements of both Perth Children's Hospital and the Wagga Wagga Base Hospital projects, you can now also get your hands on it via special order (lead times apply).

Addition to Double Punched Nogging Track Range



Rondo has added a 64mm version of its Double Punched Nogging Track to join the existing range of 76, 92 and 150mm sizes.

This will provide another cost effective nogging track where back to back 64mm studs are specified.

Previously if such a product was required, then the standard track had to be processed twice at considerable additional cost. The additions are designed for use with back to back studs.

The 64mm version provides cost savings by reducing labour required on site, achieved by replacing the need to cut and notch the standard track.

This product is, like the other sizes, available by order and therefore lead times apply.

Please check with your local Rondo sales office for lead times.

'RONDO HOW' YOUTUBE VIDEOS

We have recently launched our latest YouTube series called 'Rondo How', created to demonstrate 'how to' use Rondo products and feature a number of tips, tricks and new products to make your job easier.

Go online now to find out 'How to build a Rondo MAXIframe® System' and 'How to use the Rondo 130 Rod Bender Tool' by visiting www.youtube.com/rondobuildingservice

More Rondo How videos will be added in the coming months.



what's
behind it all | **manufacturing capabilities**



Our manufacturing capabilities are highly flexible, versatile and innovative. We can manufacture a vast number of products on any one machine, which means not only can we produce our standard range at fast rates but we can also customise products to suit your individual project needs.

It's our ability to provide tailored solutions that has led to us being a part of the best projects all over the world.

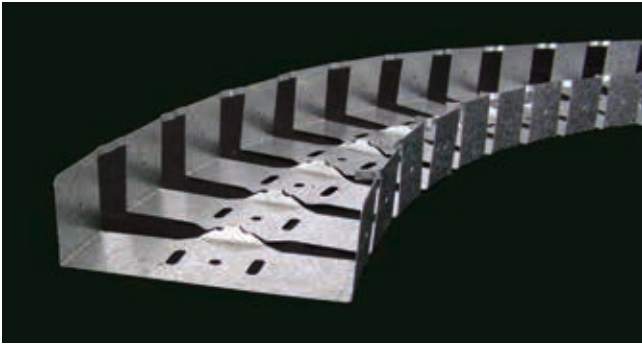
That's why...

we're behind the best buildings

RONDO[®]
www.rondoglobal.com

PRODUCT NEWS

New and Improved Rondo Flexible Track



Our Flexible Track has been improved to not only make it more flexible and therefore easier to use, but also to improve its installation capability.

The 64, 76, 92 & 150mm sizes are now all manufactured from special 0.50 BMT x 50mm deep Deflection Track with a modified 'cut out' profile offering greater ability to achieve the curves you require on site.

The 51mm version (Rondo 103) will retain its 32mm deep profile and our improved Flexible Track will take on the existing Deflection Head Track part numbers (Rondo 107, 108, 109 and 110).

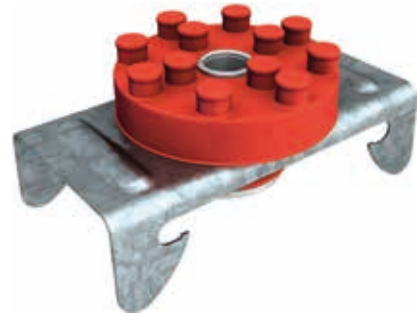
New packaging for Rondo clips



Rondo clips 139, 188, 237, 239, 2534 and 700 are now being packaged in boxes, moving away from the plastic bag packaging we previously used. Packaging in boxes offers a more effective method for storing and transporting product.

The new boxes have a one-piece lid with a Rondo logo on the top and boxes will be labelled on the short and long side of the box for easier identification when packed. Sub-packs and stock pack quantities for the clips will remain the same as per the current Price book.

Make some noise... our Acoustic Mounts have a new look



Following the release of our new Acoustic Wall & Ceiling System Manual last year, we have re-branded our Acoustic Mounts to be easily identifiable on site. Not only will they be stamped Rondo but each resilient mount will now be coloured Rondo Red*.



We will also be adding two new Suspension Rod Hanger Isolators to our range; WHIB (blue) and WHIP (pink) which will supersede our WHIR, WHIW, WHIY Isolators. The new isolators will improve the ceiling acoustical efficiency across a more practical ceiling weight range. Our popular WHIG (green) Isolator will still be available.



To see our full Acoustic range and download our Acoustic Manual, visit www.rondo.com.au/acoustic



*excludes WHI Isolators, STDC Mount and BetaGrip® BG03 Clip

UPDATE

Kids Under Cover Cubby House Challenge

We recently had the privilege of being a Gold Sponsor at the Kids Under Cover Cubby House Challenge held at the Melbourne International Flower and Garden Show. The five-day event showcased five Cubby Houses designed and built by some of the best architects and builders in the industry, all in the name of raising money to help prevent youth homelessness.

The highlight of the Kids Under Cover Cubby House Challenge was the Twilight Auction Event where each of the cubbies were auctioned off. The Cubby Houses looked great and the auctioneers did an incredible job securing a record result for Kids Under Cover with total cubby sales of \$63,000. Total funds raised at the challenge were over \$100k. These funds raised will go directly into the Kids Under Cover studio and scholarship program to help prevent youth homelessness and keeping families together.



To enervise the Kids Under Cover volunteers, we gave away a Rondo Extreme Bike to the most enthusiastic volunteer. The bike was awarded to Sally who has volunteered at two Kids Under Cover Cubby House Challenges and has been with the foundation for 10 years. Congratulations Sally.

Keeping in line with what we do best, we cast our vote for the 'Most Innovative' Cubby, which we awarded to Archsign Pty Ltd and Cas Property Corporation for their 'Duplay' Cubby. They were the first entrants to make a dual occupancy cubby and it raised \$16,500 for Kids Under Cover.

Learn more about our partners 'Kids Under Cover' and how you can help at www.kuc.org.au



*The 'Duplay' Cubby
by Archsign Pty Ltd and Cas Property Corporation*

When it comes to airborne and impact sound performance



This is sound advice

We commissioned acoustic experts, Norman Disney & Young Acoustic Services to advise, monitor and analyse an extensive programme of airborne sound and impact insulation tests carried out at the laboratories of the University of Auckland, New Zealand, and CSIRO at Highett, Victoria.

The result is the Rondo Acoustic Wall & Ceiling Systems Manual that shows, for the first time, how our systems comply with all relevant codes and will help you to design your next project with confidence.

To find out more, and to see the results of the tests, visit www.rondo.com.au/acoustic and download the book now.

RONDO®
www.rondo.com.au/acoustic

RONDO® is a registered trademark of Rondo Building Services Pty Ltd. ABN 69 000 289 207.